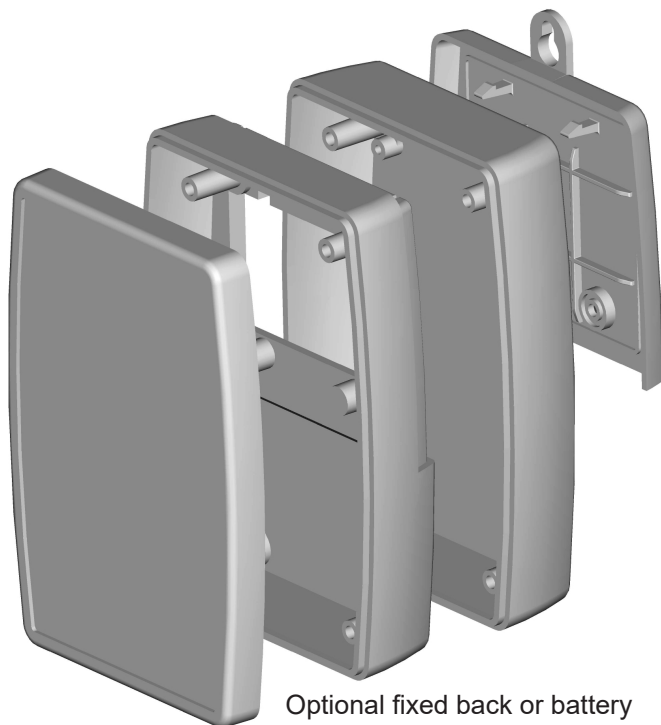


# SEALED HANDHELD OR WALL MOUNTED ENCLOSURES

**SERIES**  
**3003**



Optional fixed back or battery door and optional key hole wall mounting.

## TYPE 3003

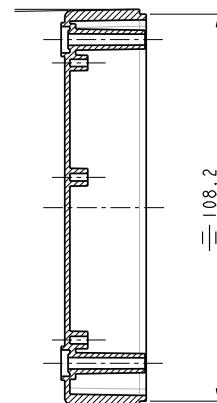
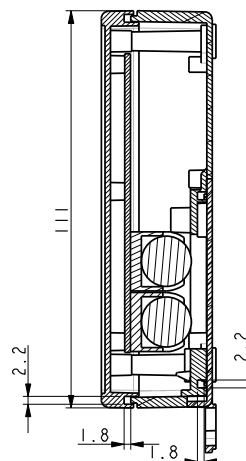
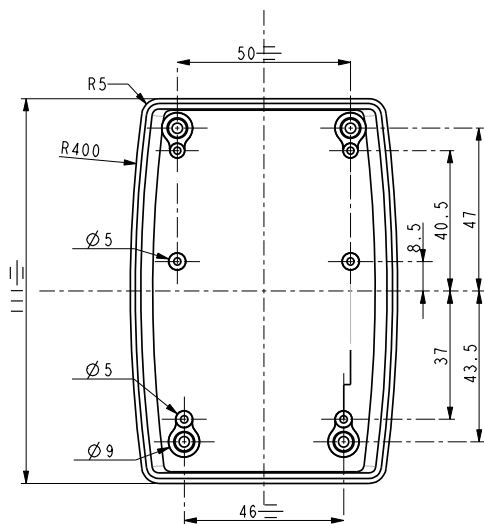
This series is designed for remote controllers, measuring devices, hand held control devices, portable data recorders and other fields of electronics. Large smooth recessed area for membrane switches or label.

Customization available for display window and switch button hole. Each with battery cover.

Battery door and wall mounting flange is optional.

## TECHNICAL DATA:

Top part:	PC
Base part:	PC
Colour:	Grey or black
Temperature:	-40°C - +100°C
Self-extinguishing:	UL94-VO
Sealing:	IP65 / (IEC529)



## SERIES 3003:

Type 3003, Complete, grey, no battery door, 111 x 77 x 31
Type 3003, Complete, black, no battery door, 111 x 77 x 31
Type 3003, Complete, grey, w. battery door, 111 x 77 x 31
Type 3003, Complete, black, w. battery door, 111 x 77 x 31
Type 3003, Complete, grey /w flange for wall mounting, no battery door
Type 3003, Complete, black /w flange for wall mounting, no battery door
Type 3003, Complete, grey /w flange for wall mounting + battery door
Type 3003, Complete, black /w flange for wall mounting + battery door

## ORDER CODE:

p/n 3669883003
p/n 3669863003
p/n 3669883043
p/n 3669863043
p/n 3669300003
p/n 3669400003
p/n 3669695003
p/n 3669690003

- All measurements are in mm.
- Technical drawings available on: [www.bernic.dk](http://www.bernic.dk)